



LUNCHEON MEETING, THURSDAY, November 19th, 2015, 11:45 am
Moose Lodge # 1534, 4211 Arctic Blvd, Anchorage

Reality Capture Systems and 3D Modeling

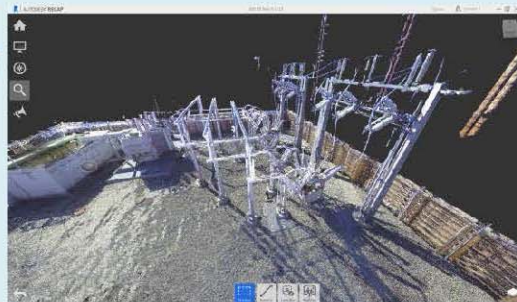
In 2014 ML&P began an ambitious program to use photogrammetry to produce 3D models of underground vaults from pictures so a vault would not have to be opened prior to beginning a new design.

The next steps were incorporating terrestrial laser scanning, hand held 3D scanners and ground penetrating radar into the process, along with standard survey and locating techniques. Now ML&P is using these technologies to create 3D models of its vaults, substations, and job sites. This gives an unprecedented visualization of real world assets for engineers and CAD technicians that allow them to be in places they would not otherwise go. As we explore this new field we are finding new ways to save time, increase safety, and produce new ways of approaching designs. Three dimensional modeling allows one to be there, to see it as it actually is! This isn't an interpretation of the data; you are "in the data". It's a paradigm shift for the way we see our underground data.

Presenters: **Forrest Roy and Aaron Mason**, enthusiastic leads that are hands on and hip deep in pushing boundaries and changing ML&P's processes.



Underground Vault



Substation Point Cloud



Substation Model

Please, RSVP: to Marc at 646-9661 or e-mail him at: mfrutiger@rmconsult.com as soon as possible so the lunches can be ordered & the room set up to accommodate everyone.

Lunch is \$15, cash, check or credit card accepted at the door

All APWA meetings are open to the public and everyone is welcome.