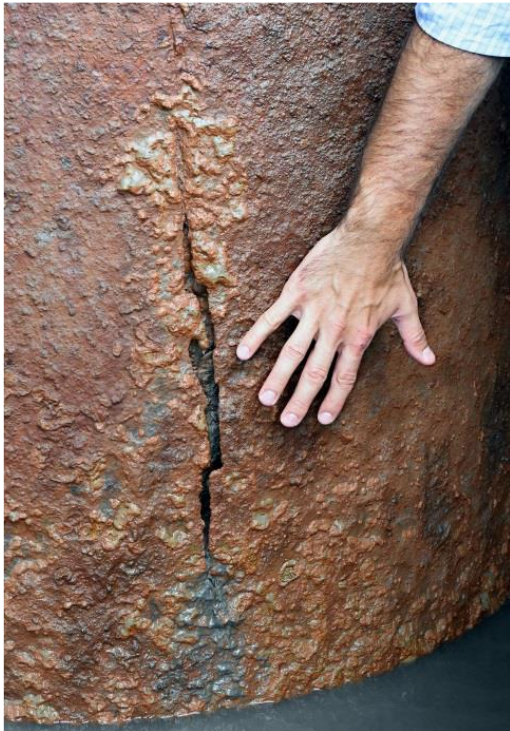




**UAA College of Engineering**  
UNIVERSITY of ALASKA ANCHORAGE



UAA Professional Development Seminar Series

### **Port of Anchorage**

Presented by: Jim Jager

Jim will discuss the Port of Anchorage's principal in-bound cargo terminal. The port opened shortly after statehood in 1961, and facilitates the movement of almost four million tons of fuel and cargo every year. The only remaining deep-water port in Southcentral Alaska following the 1964 Good Friday Earthquake and resulting tsunamis, it is now suffering a slow-motion disaster from corrosion and age.

Anchorage's docks are supported by 1,423 hollow steel piles that have lost up to three-quarters of their original thickness, have diminished load-bearing capacity, and are unlikely to survive a significant earthquake. The city reinforced 559 piles with steel jackets through the end of 2016, but this repair is a one-time fix that only lasts 10-20 years, and does little to enhance operational efficiency or earthquake survivability. Consequently – if they are not replaced – Anchorage's existing docks will start closing in about 10 years, regardless of seismic activity.

Jim Jager is the Port of Anchorage's external affairs director who works on special projects for Municipal Light and Power and the office of Anchorage Mayor Ethan Berkowitz.

Friday, October 13, 2017

11:45 am - 12:25 pm

UAA College of Engineering, EIB 211